

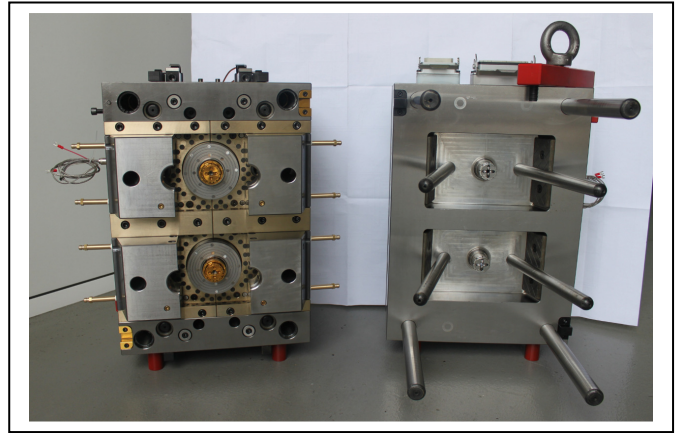


ADVANCED ENGINEERING SOLUTIONS FOR MOLDS

Case Studies – End Cap – (May 2012)

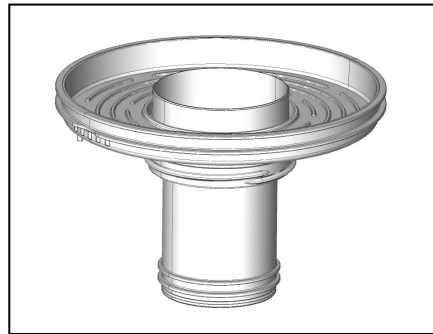
Project Profile:

Part Name: End Cap
Number of Cavities: 2 cavities
Mold Size: 596 x 396 x 611
Mold Class: 101
Gating system: 2 Drop Hot Runner into a cold runner
Resin: PC – Lexan 244R
Ejection system: Stripper action + Ejector Pins
Finish Type: Chemical Texture - Mold Tech + B1 Polish
Application: Filter Systems
Lead time for first shots after engineering approval: 10 weeks
Lead time for tool qualification: 3 ½ weeks
Final Destination: USA



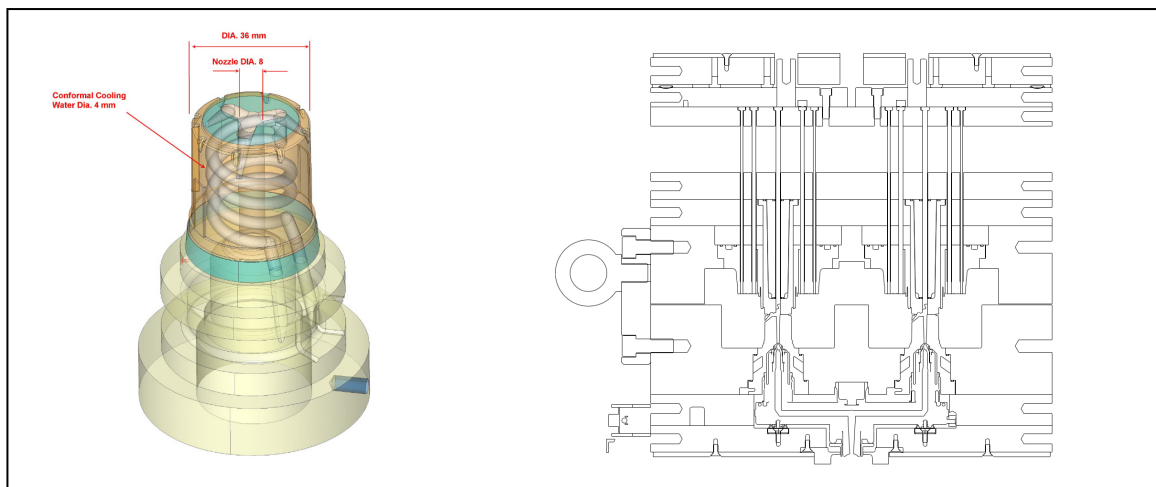
Project Challenges:

- Fill Thin wall rib structure (0,67 mm)
- Resin - Lexan 244R
- Minimal resin waste
- Cycle time
- Part quality and appearance



The Solutions:

We were able to resolve this challenge by using a 2 drop hot runner system and develop a special **Conformal Cooling Insert** that was able to accommodate the nozzle drop and make the cavity geometry. This Conformal Cooling Insert was done by SLS – metal, with a built in cooling circuit.



[AES MOLDS – Advanced Engineering Solutions for your molding challenges](http://www.aesmolds.com)

PORTUGAL - AES Moldes, Lda • Travessa de Oeiras • Lote 67 N° 47 Vergieiras • 2430-523 Marinha Grande • Tel. ++ 351 244 574870

PORTUGAL – AES Manufacturing • Rua das Rosas N° 108 • Pedra de Baixo • 2430-400 Marinha Grande • Tel. +351 244 775 111

USA - AES Molds Inc. • 5 Wake Robin Rd • Unit 3503 • Lincoln, RI 02965 • Tel. 401 617 0243

www.aesmolds.com